

OUTBACK

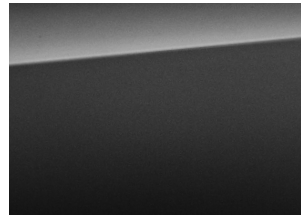
EXTERIOR COLOUR



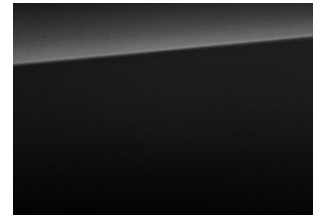
CRYSTAL WHITE PEARL



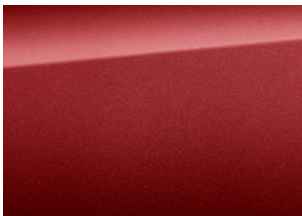
ICE SILVER METALLIC



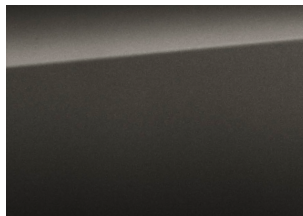
DARK GREY METALLIC*



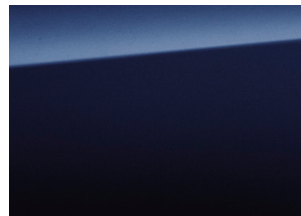
CRYSTAL BLACK SILICA*



VENETIAN RED PEARL



PLATINUM GREY METALLIC



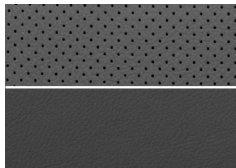
LAPIS BLUE PEARL*



TUNGSTEN METALLIC*

SEAT MATERIAL

LEATHER*1

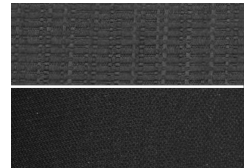


BLACK



IVORY*2

FABRIC



BLACK



SUBARU

Confidence in Motion

Owing to printing limitations, colour may differ from those shown in this chart. In addition, colours and seat variations may vary according to the individual market.

*1 Standard on 2.0D-S and 2.5i-S, optional on 2.0D and 2.5i.

2 Available on 2.0D-S and 2.5i-S, for 4 Exterior Color only.

FUJI HEAVY INDUSTRIES LTD.

Printed in Belgium (15BOXXX-01CC)